



#### Model GL-20

#### Standard Specifications

Gas.....	Air, Steam, H2S, Biogas, Fuel Gas, CO2, N2, LNG, Custom
Flow Range .....	100% to 35% of Rated Flow with Combination Control
Pressure Range.....	Up to 30 PSIG / 2 bar
Maximum Case Pressure .....	50 PSIG / 3.5 bar
Stages.....	Single Stage
Drive Type.....	Direct Coupled
Power Driver Options.....	Electric Motor, Steam Turbine, Combustion Engine
Gearbox .....	Helical Gear Set
Cooling Lubricant.....	Lubricant Cooling (Air or Liquid)
Lubrication Options.....	Pressurized Oil
Bearings.....	Pinion - Tilt Pad Journal, Drive Journal
Enclosure.....	Optional
Sound Level .....	Job Specific
Sound Level with Enclosure....	Job Specific
Filtration Rating (std) .....	99% at 2 micron, or as required
Seals Air.....	Labyrinth Type

#### Standard Materials of Construction

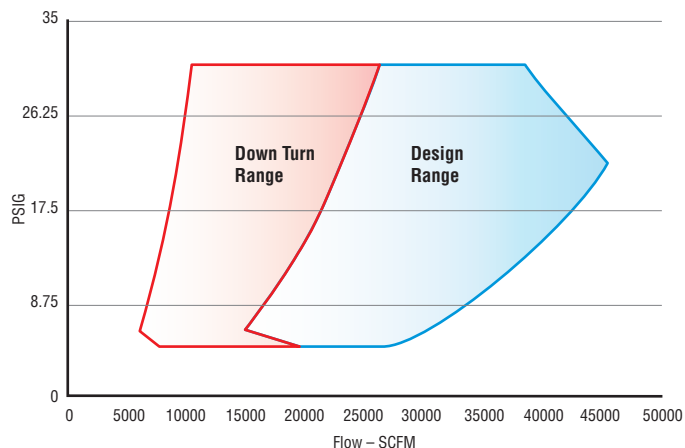
Casing.....	Grey Iron GG25, Ductile, ASTM A536, A48 or Equal
Bearings.....	ANSI 5140 Steel, Babbited, 40CR Alloy Casing
Impeller.....	AlCu2MgNi Alloy (anodized), 17-4PH, Titanium, Inconel
Inlet Guide Vanes .....	Stainless Steel 316
Discharge Diffuser Vanes.....	Stainless Steel 316
Gears .....	AISI 8620, Steel 10CrNiMo to AGMA 12/13
Shaft .....	Steel 10CrNiMo
Seals Air.....	ASTM B86 Z25631 Zinc Alloy Aluminum
Seals Gas .....	ASTM C695 Molded Graphite
Blower Base Skid .....	ASTM A36 Structural Steel
Isolation Pads .....	St. SIS 1312 inertial dampening with rubber hardness 60
Finish .....	2 Part Epoxy Lone Star Blue RAL5005
Enclosure .....	Aluminum, Galvanized Steel, Stainless

#### Optional Testing & Certifications

API.....	API 617, API 672, API 614
Electrical.....	UL 508A, CE, CSA
Hazardous Location .....	ATEX, Class1 - Division 1- Division 2, Zone 0-2
Balancing.....	ISO 1940 - G2.5, ~4W/N API
Noise Level.....	OSHA 1910.95, ISO 2151:2004
Performance.....	ASME PTC-10, PTC-13, ISO 5389
Hydro Testing .....	1.5 Time MAWP
Overspeed Testing.....	Optional
Positive Material ID.....	XRF, OES, Material Certification
NACE Compliance .....	Optional
Special Coatings.....	Optional

#### Service

Air, Gas, Pressure, Vacuum

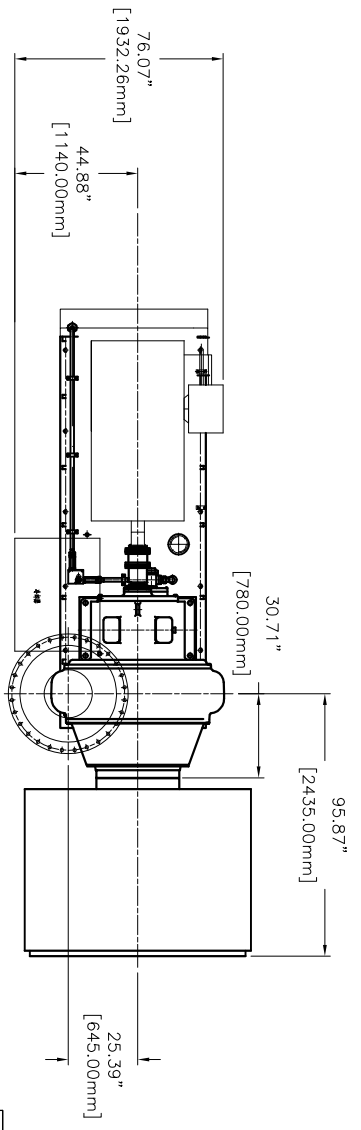
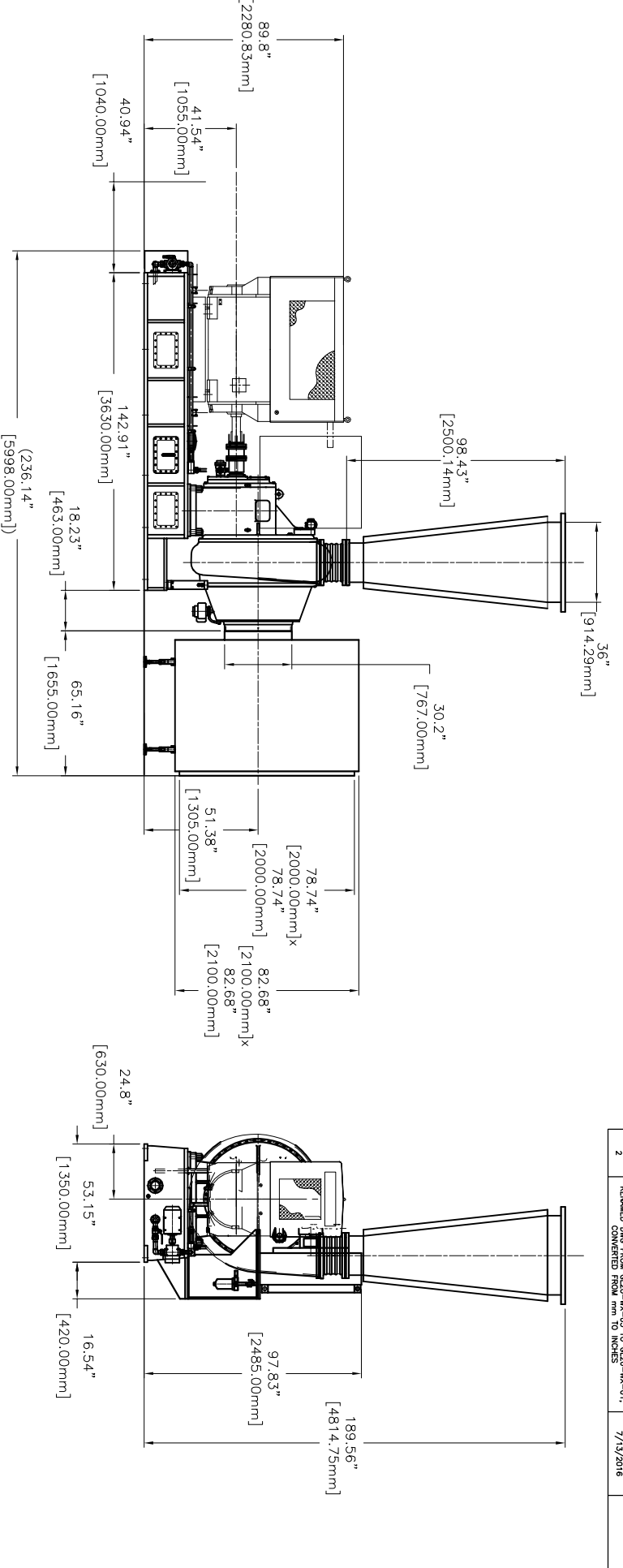


#### Control Options

Control Methods .....	Variable Inlet and Discharge Guide Vane, speed control, blow off, or combination
Local Controller.....	sLOC™ Standard - Custom for Allen Bradley, Modicon, Siemens or Other
HMI .....	sLOC™ Standard or Custom HMI
Remote Monitoring .....	sLINK™ or Custom
Control Set Points.....	Pressure, Flow, Power, Custom Input




REV	DESCRIPTION	DATE	APPROVED
1	AIR OUTLET VERTICALLY UP	5/27/2016	
2	REMOVED DWG FROM GL20-WX-03 TO GL20-WX-01. CONVERTED FROM mm TO INCHES	7/13/2016	



- NOTES:
1. BLOWER EQUIPPED WITH HIGH VOLTAGE MOTOR.
  2. BLOWER INSTALLED BY EXPANSION BOLTS.

HEIGHT & MOTOR SIZE	WEIGHT (LBS)
1750HP	24,251



DRAWING IS FOR REFERENCE ONLY UNLESS SPECIFIED AS RELEASED.		APPROVALS		 <b>LONE STAR BLOWER</b>
DRAWN	BW	07/013/2016	TITLE	
CHECK			GL-20 GEARED TURBO	
ENGINEER			GENERAL ASSEMBLY	
MANUFACTURING CONTROL			SIZE (CAGE CODE)	DWG NUMBER
APPROVED			A	GL20-WX-01
			SCALE	REV
			SHEET 1 OF 1	02